





**Our foundation
is strong**



**We must better
compete on the
national and
global stage**



**Our inequities
are persistent**



**We must
diversify more**



**A proactive
approach will
drive
responsible,
inclusive
growth**



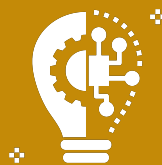
**We must
develop and
retain more
local talent**



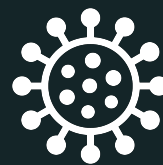
**More
integrated
philanthropic
engagement
will improve
regional
outcomes**



**Tomorrow's
growth
depends upon
integration**



**Technology
growth is
essential for
our future**



**COVID-19 has
accelerated
marketplace
changes**



**Life in the DMV
is expensive**



**We need to
work from an
integrated
regional plan**

KEY THEMES

IMPACT AREAS

ECONOMIC ENGAGEMENT & OPPORTUNITY



Technology &
Connectivity



Finance



Workforce

SAFETY & SOCIAL ENABLEMENT



Education



Public Safety



Transportation

PHYSIOLOGICAL & BASIC NEEDS



Food & Water



Energy



Healthcare



Housing



www.connecteddmv.org

AND WE GET A LOT DONE.

